

# Accessible and affordable digital education for everyone

## Ordering is quick and easy

1. Go to [easy4u.school/order](https://easy4u.school/order) and enter your login code:  
**R8AHCF7** Or click [HERE](#) to go directly to the webshop
2. Choose your device and select the term of your Easy4u Service
3. Opt to rent or purchase
4. Fill in all details and choose your payment option
5. You will receive an order confirmation by email

### Conditions for rent:

- ✓ Customer pays a deposit in advance equal to four rental periods (this does not apply in case of purchase)
- ✓ Option to buy at the end of the term against retention of the deposit amount
- ✓ Payment by recurring payment (per month or per year)
- ✓ No credit rating assessment or registration needed



## Your School devices Including the Easy4u All-in-1 Service



chrome

Please visit the webshop for more information



**Lenovo - Chromebook 300e Yoga Gen 4**  
11.6" touch, 64GB eMMC, MediaTek Kompanio 520, 8GB RAM



**Lenovo - 500e Yoga Chromebook Gen 4**  
12.2" Touch, 64GB eMMC, Intel N100, 8GB RAM

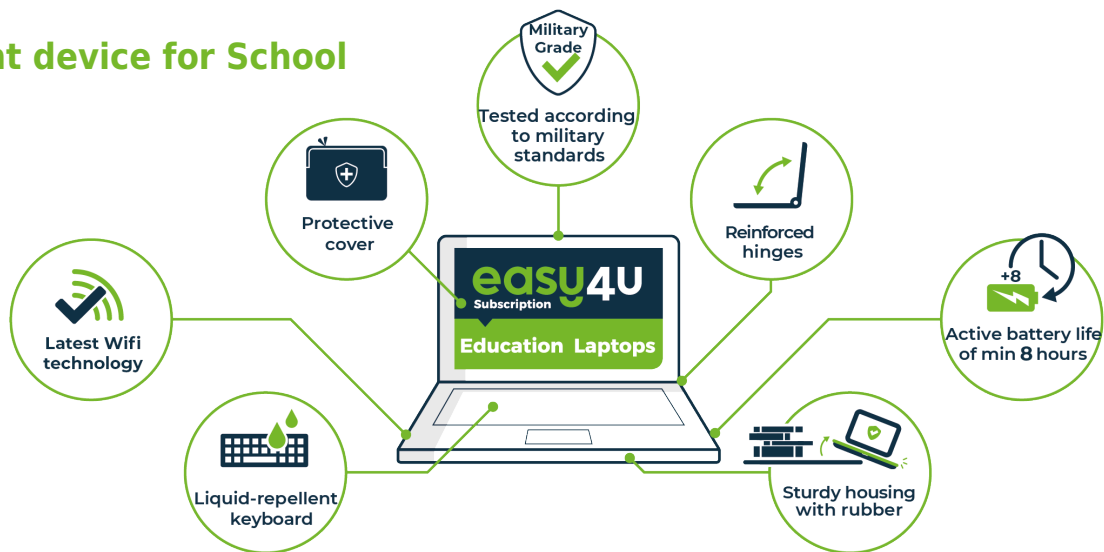
24 mth	easy4u Subscription	36 mth	easy4u Subscription	48 mth	easy4u Subscription
19.70 rent p/mth 470.80 purchase		15.10 rent p/mth 540.80 purchase		14.50 rent p/mth 691.60 purchase	
20.80 rent p/mth 497.20 purchase		15.80 rent p/mth 567.20 purchase		15.00 rent p/mth 718.30 purchase	

Prices are valid until the 31st of July 2025

# Accessible and affordable digital education for everyone

Our mission is to give every student access to digital education. We have developed the Easy4u Service to provide you with peace of mind, whether you rent or buy your device from us. Service, software and damage and theft coverage are all included in the prices quoted above. The School has selected the device best suited to your child's needs.

## The right device for School



**easy4u**

## All-in-1 Service

Standard with both **buy** and **rent**



### Hardware

- Premium device for education
- Active battery life of at least 8 hours
- Fast and stable wireless internet through modern wifi connection
- Choice of the model has been agreed beforehand with the educational institution

### Software

- The correct software for school is pre-installed
- Connecting to the school system (where applicable)

### Service

- Loan device available for repairs, damage and theft
- Telephone, email and live chat support by customer service
- Battery warranty
- In-house repair service
- Service via School or home address during holidays
- Online customer portal
- Always one point of contact for the customer

### Damage and theft coverage

- Complete settlement by Class Technology Solutions
- Damage and theft cover with a limited deductible of £50.00 per event (unlimited events)
- Including moistureproof protective cover

